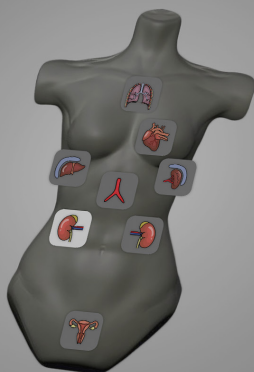




 **BODYWORKS|Eve®**

Realistic simulation in Point of Care Ultrasound

BODYWORKS/Eve™



HR 66

RR 12



Right Kidney

- ☐ Renal Calculus
- ☐ Mild Hydronephrosis
- ☒ **Moderate Hydronephrosis**
- ☐ Severe Hydronephrosis
- ☐ Moderate Hydronephrosis with calculus
- ☐ Severe Hydronephrosis with a PUJ Obstruction in the Right Kidney

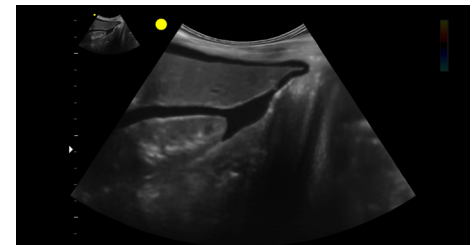
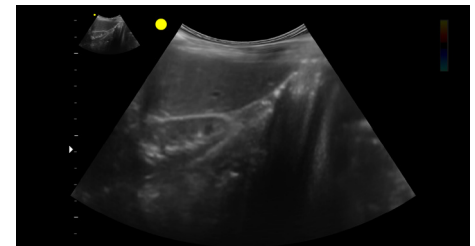
*BodyWorks Eve is a state-of-the art ultrasound patient simulator designed to meet the training needs of healthcare professionals practising **Point of Care Ultrasound (PoCUS)** and supports the curriculum defined by the International Federation of Emergency Medicine (IFEM).*

Providing a comprehensive education in cardiac anatomy, echocardiography (TEE & TTE), lung, transabdominal (TA) and pelvic ultrasound, BodyWorks Eve is a highly realistic, female patient manikin with many compelling features to facilitate immersive scenario training in **Emergency Medicine and Critical Care**.



From picking up a probe for the first time to testing diagnostic skills in simulated scenarios, students can now learn:

- ELS, FAST, eFAST, FICE, RUSH protocols
- Probe manipulation skills
- Recognition of abnormalities and pathology
- Assessment skills to guide decisions for patient referral or discharge
- Doppler and M-mode functions



BodyWorks Eve active scenario mode allows tutors to alter the physiological parameters in real time

*Over 100 patient cases using real patient scans for self-directed learning and tutor-led scenarios support the PoCUS curriculum in **Emergency Medicine and Critical Care**.*



**CRITICAL
CARE**



**HEART &
LUNG**

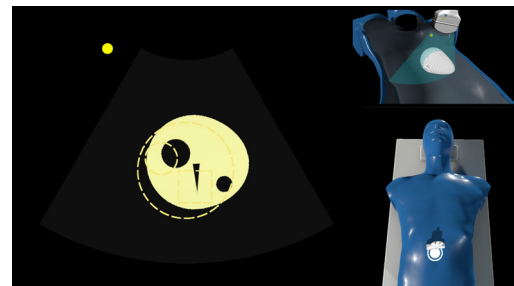


**EMERGENCY
MEDICINE**

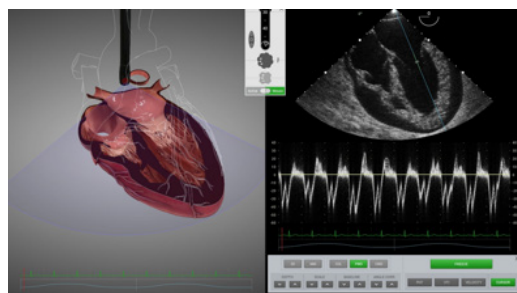


Probe Manipulation Skills Module

Trainees can learn probe manipulation skills and how to examine complex structures. An engaging sequence of 3D models have been designed to teach the subtleties of probe movements required to attain accurate ultrasound views.



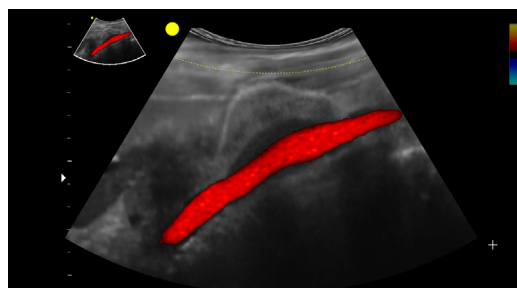
3D models support transducer movement skills and the examination of complex structures



Cardiac Tamponade

Thoracic, Abdominal and Pelvic Imaging

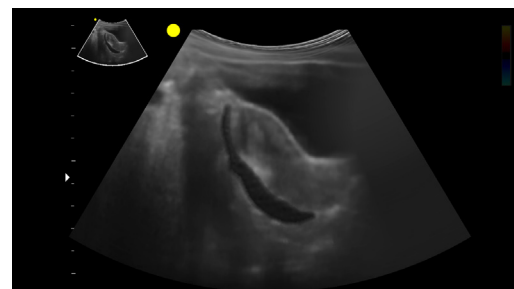
All the cases you'll need to teach point of care ultrasound on a single manikin that you can scan from the clavicle to the bladder.



Fusiform Abdominal Aneurysm

Cardiac Imaging

When practising TTE and TEE probe handling skills, trainees can observe probe positioning in relation to the virtual, beating 3D heart with effects on cardiac imaging in real time. Doppler modalities (CFM, PWD, CWD) and M-mode are available along with the tools with which to make accurate quantitative assessment.



Pelvic fluid

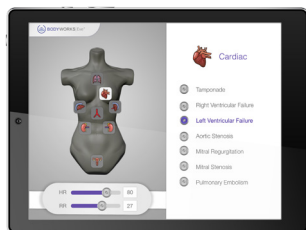
Recognise Abnormalities and Pathology

Multiple pathology models have been created to facilitate the ultrasound evaluation of patients with structural and functional disturbances.

Over **100 patient cases** using real patient scans will develop diagnostic skills and recognition of common abnormalities in emergency medicine to guide evaluation and decision making for patient referral or discharge.

BodyWorks Eve gives access to real patient-based training where students can work through patient cases independently and at their own pace.

Over 10,000 pathology variations are available to the tutor to further extend students' assessment skills.



The Instructor Tablet enables the tutor to run scenarios 'on the fly' and easily change the patient's condition and level of severity to test assessment and decision-making skills.



The iSimulate Facilitator Pad allows the tutor to change vital signs including heart rate, respiratory rate, blood pressure and EKG to increase the complexity of the scenario.



The iSimulate Patient Monitor is wirelessly linked to the Facilitator Tablet to display the physiological changes being made by the tutor during the scenario.

BodyWorks Eve can be purchased in the following modalities:

- BodyWorks Eve PoCUS
- BodyWorks Eve PoCUS and HeartWorks (TTE/TEE)

Optional Extras:

- iSimulate Facilitator Pad and Patient Monitor



Patient Scenarios

Our easy-to-use operating tablets enable the tutor to create engaging and dynamic scenarios to deliver highly effective simulation-based training. Clinical realism is greatly enhanced while critical thinking and patient management skills are extensively challenged.

Core clinical applications

- Basic cardiac
- Basic trauma / eFAST
- Simple assessment of fluid status
- Assess potential spaces for free fluid
- Simple lung assessment
- Simple early pregnancy assessment

Disease systems

Trauma

- Pericardial fluid
- Peritoneal fluid
- Pleural fluid

Shock / Hypotension

- Cardiac (pericardial fluid, global LV function)
- Vascular (IVC,AAA)
- Chest / Abdomen / Pelvis (pleural fluid, peritoneal fluid)
- Adjuncts (pneumothorax)

Breathlessness

- Cardiac (pericardial fluid, global LV function)
- Chest / Abdomen / Pelvis (pleural fluid, pneumothorax)

HIV / TB (FASH)

- Cardiac (pericardial fluid)
- Chest (pleural fluid)
- Abdomen (peritoneal fluid)

Aorta

- Fusiform Aneurysm (small, medium, large)
- Saccular Aneurysm
- Dissecting Aneurysm

Cardiac

- | | |
|---|------------------------|
| • Tamponade | • Aortic Stenosis |
| • Right Ventricular Failure (Distended IVC) | • Mitral Regurgitation |
| • Left Ventricular Failure | • Mitral Stenosis |
| | • Pulmonary Embolism |

IVC Evaluation

- Distended IVC (RVF)
- Underfilled IVC (Hypovolemic Heart)

Renal and GU

- Renal Calculus
- Hydronephrosis (mild, moderate, severe)
- Moderate Hydronephrosis Calculus
- Severe Hydronephrosis with PUJ Obstruction in the Right Kidney

Obstetrics and Gynaecology

- Ectopic Pregnancy Right & Left Adnexa
- Ruptured Ectopic Pregnancy Right & Left Adnexa
- Early Pregnancy, No Gestational Sac
- IUP - 6 weeks
- Pelvic Mass (small, large)

Hepato-biliary

- | | |
|----------------------------|--|
| • Contracted Gall Bladder | • Adenomyomatosis |
| • Gall Bladder Calculus | • Dilated Common Bile Duct with Calculus |
| • Calculus Cholecystitis | • Liver Metastases Multiple Lesions |
| • Acalculus Cholecystitis | |
| • Dilated Common Bile Duct | |

Chest and Lung

- Right Pneumothorax (small, medium, large)
- Left Pneumothorax (small, medium, large)
- Right Pleural Effusion (small, medium, large)
- Left Pleural Effusion (small, medium, large)
- Bilateral Pleural Effusion (small, medium, large)

Trauma

- Fluid Right Subphrenic Space (small, medium, large)
- Fluid (small, medium, large)
- Fluid Morison's Pouch (small, medium, large)
- Fluid Left Subphrenic Space (small, medium, large)
- Fluid Splenorenal Space (small, medium, large)
- Complex Fluid Right Subphrenic Space (small, medium, large)
- Complex Fluid Morison's Pouch (small, medium, large)
- Complex Fluid Left Subphrenic Space (small, medium, large)
- Complex Fluid Left Splenorenal Space (small, medium, large)
- Complex Fluid Pouch of Douglas (small, medium, large)

MedaPhor is proud to work closely with healthcare educators from around the world to develop market leading simulators and learning systems that will help better prepare and support clinicians in the care of their patients.



www.medaphor.com

UK & Europe

MedaPhor Ltd.
Cardiff Medicentre | Heath Park
Cardiff | CF14 4UJ
+44 (0) 2920 756534

North America

MedaPhor North America Inc.
13010 Morris Road | Building 1
Suite 600 | Alpharetta
GA 30004 | +1 (770) 777-8191

Asia-Pacific

MedaPhor Asia Pacific
Fu Cheung Centre | Fotan
Shatin, N.T | Hong Kong
+(852) 3568-9009