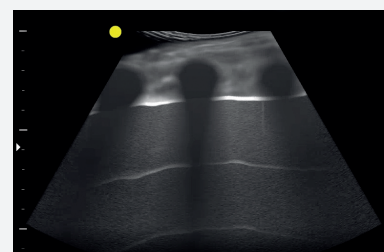
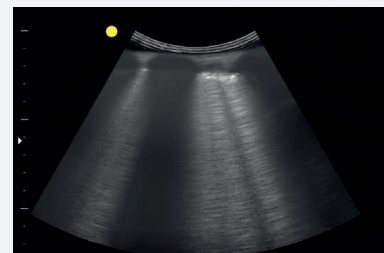


In order to contribute to the fight against the global pandemic, we have developed a **COVID-19 lung ultrasound module** to help frontline clinical staff to practice and train in the use of lung ultrasound as a diagnostic tool in the identification and monitoring of respiratory related COVID-19 disease.

The module includes four new cases for live scanning on the ultra realistic Eve manikin:

- COVID-19 example 1 – increased B-lines and thickened irregular pleura
- COVID-19 example 2 – small bilateral consolidation
- COVID-19 example 3 – large consolidation in the right lung
- New improved normal lung example

As the frontline fight against the virus evolves, we will look to release additional upgrades to the COVID-19 lung ultrasound modules as appropriate.



CRITICAL  
CARE



HEART &  
LUNG



EMERGENCY  
MEDICINE

BodyWorks Eve is an ultra realistic female patient simulator designed for interactive Point of Care Ultrasound (PoCUS) scenario training.

Complete with over 100 real patient scans and over 10,000 pathology variations across cardiac, lung, transabdominal and pelvic ultrasound, BodyWorks Eve is designed to meet the training needs of healthcare professionals who wish to practise PoCUS in Emergency Medicine and Critical Care.

For more information please contact us at  
[hello@intelligentultrasound.com](mailto:hello@intelligentultrasound.com)  
or contact your local BodyWorks representative.



**INTELLIGENT  
ULTRASOUND<sup>®</sup>**

[www.intelligentultrasound.com](http://www.intelligentultrasound.com)