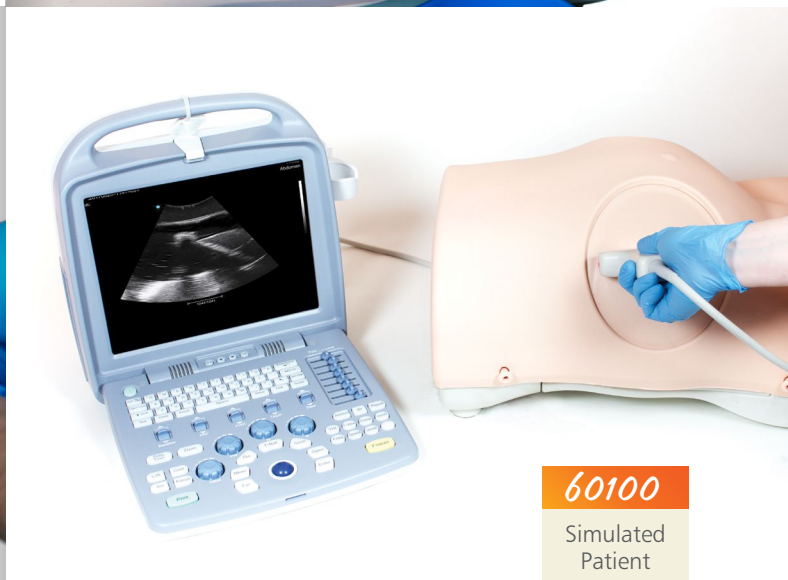
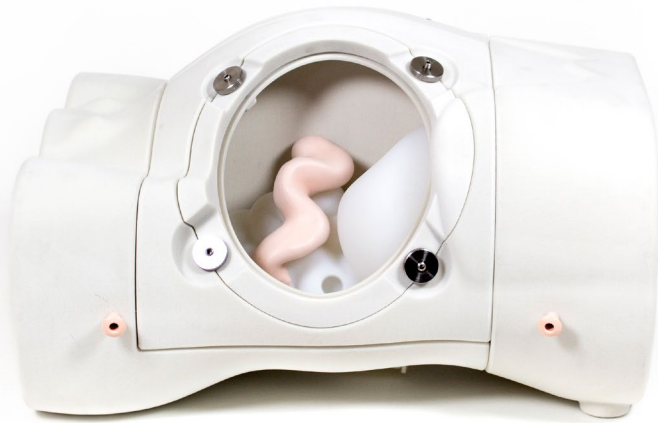




PARACENTESIS TRAINER



60100
Simulated
Patient

This trainer fulfills the fundamental component of core medical training in diagnostic and therapeutic techniques of Paracentesis, for either palpation or ultrasound guided techniques.

Trainees are able to identify the echogenic anatomy enabling them to learn how to safely insert a needle or catheter into the peritoneal cavity.

Learning has never been more lifelike

limbsandthings.com



Skills

- Familiarity with the abdominal regions and underlying anatomy
- Palpation of anatomical landmarks
- Identification of excess fluid
- Through ultrasound, safe needle/catheter insertion sites
- Insertion of needle into peritoneal cavity for therapeutic or diagnostic purposes
- Professional-to-patient communication

- **60101** Paracentesis Skin
- **60102** Paracentesis Pads (x2)
- **60103** Paracentesis Liver
- **60104** Paracentesis Spleen
- **60105** Paracentesis Bowel Insert
- **60106** Paracentesis Floating Bowel
- **60107** Paracentesis Clamping Frame
- **60108** Paracentesis Large Volume Refill System
- Base Unit
- Funnel
- Carry Case

Product Qualities

ANATOMY

- Torso featuring bony landmarks (pubis symphysis, iliac crest) and umbilicus
- Internal anatomy includes:
 - Liver
 - Spleen
 - Bowel
 - Floating Bowel

REALISM

- Realistic tissue and needle response

KEY FEATURES

- Palpation or ultrasound techniques can be practiced (side by side)
- Internal echogenic anatomy to allow recognition of landmarks under ultrasound
- Two 3.5 litre chambers can be filled with water for practise drainage
- Cost effective consumable pads

VERSATILITY

- Self-sealing pads, withstanding up to 200 needle or up to 100 rocket catheter insertions
- Ability to insert and remove a drain
- Positions both supine and lying on side

SAFETY

- Latex free

Curriculum References

UK

CORE MEDICAL TRAINEES:

Core Medical Training (CMT) ARCP Decision Aid, Joint Royal College of Physicians Training Board, 2015, p. 4

GASTROENTEROLOGY SPECIALIST TRAINEES:

Specialty Training Curriculum for Gastroenterology, Joint Royal College of Physicians Training Board, 2007, p. 38

ONCOLOGY SPECIALIST TRAINEES:

Specialty Training Curriculum for Medical Oncology, Joint Royal College of Physicians Training Board, 2007, p. 8

ACUTE CARE COMMON STEM TRAINEES:

Acute Care Common Stem Core Training Programme, Royal College of Anaesthetists, 2012, p. 87

ADVANCED NURSE PRACTITIONER TRAINEES:

Curriculum and Assessment Systems for Training in Emergency Medicine, Royal College of Emergency Medicine, 2015, p. 127

USA

EMERGENCY MEDICINE RESIDENTS:

University of Rochester Medical Center Emergency Medicine Residency Curriculum for Procedural Competency, 2011, p.4

INTERNAL MEDICINE RESIDENTS:

American Board of Internal Medicine Policies and Procedures, July 2017, p. 4

FAMILY MEDICINE RESIDENCY:

Procedures for Primary Care, p. 1380-1384.

SURGERY:

ACGME: Surgery FAQ, p. 5.

DIAGNOSTIC RADIOLOGY:

ACGME, Review Committee for Radiology, p. 1.

INTERVENTIONAL RADIOLOGY:

ACGME, Program Requirements in Interventional Radiology, p. 9.



For demonstration or to order

Limbs & Things Ltd. Sussex Street, St Phillips, Bristol, BS2 0RA, UK

T: 00 44 (0)117 311 0500 E: sales@limbsandthings.com

limbsandthings.com